



INSTALLATION AND SERVICE MANUAL



WaterBoss® Water Filters: 97WB-IF, 97WB-CF and 97WB-AF

Rev. 1.0

Table of Contents

QUESTIONS?	1
GETTING MAXIMUM EFFICIENCY FROM YOUR APPLIANCE	2
INSTALLATION CHECKLIST	3
DO'S AND DON'TS	4
REFERENCE ILLUSTRATIONS	5
CYCLES	10
INSTALLATION AND START-UP PROCEDURES	12
SETTING THE CONTROLLER	17
CARE, MAINTENANCE AND PARTS	18
TROUBLESHOOTING	26
FILTER SPECIFICATIONS	27
LIMITED WARRANTY	28

Congratulations

on your decision to place your confidence in a superior **WaterBoss®** water treatment appliance.

Recognized worldwide for built-in quality, dependability, and ease of service, **WaterBoss®** appliances represent state-of-the-art in home water treatment. Important information is contained in this manual which will help you get the maximum benefit and enjoyment from your particular model.

We urge you to read this information carefully now and any time a malfunction may occur. In most cases, these reviews will uncover minor problems that you can correct yourself, thereby saving you time.

When calling the HelpLine, please have this guide and the serial number available. From 8 am to 5 pm EST, call 1-800-437-8993. Your serial number may be found on top of your valve assembly (See figures 2-3.)

Questions

From 8 am to 5 pm EST, use the 800 HelpLine: 1-800-437-8993

The HelpLine is available to help answer questions about specific water problems, appliance installation and operation. When calling the HelpLine, please have this guide and the serial number of your appliance available. Your serial number may be found on top of your valve assembly (See figures 2-3.)

Date of Installation: _____

Model Number: _____

Serial Number: _____

Returned Limited warranty Card Date: _____

How To Get The Maximum Efficiency From Your Appliance

1. Should your electricity be turned off for any reason you must reset the time of day if you programmed your appliance for delayed regeneration.
2. Protect your system from freezing, including drain line.
3. By-pass the appliance when servicing the well, plumbing, or pump. When work is completed, turn on the nearest cold water tap until water runs clear before putting appliance back in service. See figures 4 - 5 - 6.
4. See start-up procedures.

When calling the HelpLine, please have this guide and the serial number available. From 8 am to 5 pm EST, call 1-800-437-8993. Your serial number may be found on top of your valve assembly (See figures 2-3.)

Checklist Before Installation

1. *Water Pressure* - Not less than 30 psi constant for **WaterBoss®** filters.
2. **WaterBoss®** 97WB-AF adjusts low pH water to a neutral, non-corrosive state.
WaterBoss® 97WB-CF reduces chlorine taste and odor.
WaterBoss® 97WB-IF reduces iron, hydrogen sulfide and iron bacteria.
3. **Water Supply Flow Rate** - 5 gallons per minute is recommended as minimum.
4. **Drain** - Drain appliance to floor drain or washer drain. To prevent back-siphoning, the installer must provide an adequate air gap or a siphon break. See figure 1.
5. **Electricity** - The transformer supplied is a standard 120 volt, 60 cycle A.C. for USA or 220 volt, 50 cycle A.C. for outside the USA. See figure 8.
6. **Water Quality** - If the water supply contains sulfur, bacteria, iron bacteria, tannins, algae, oil, acid or other unusual substances, then unless the appliance is represented as being capable of treating these contaminants in the specifications, other special treatment of the water supply must be used to remove these contaminants before they enter this product.

If you have any questions call our HelpLine!

When calling the HelpLine, please have this guide and the serial number available. From 8 am to 5 pm EST, call 1-800-437-8993. Your serial number may be found on top of your valve assembly (See figures 2-3.)

Do s And Don t s

SOME DO'S

1. Do comply with all local plumbing and electrical codes.
2. Do install pressure-reducing valve if inlet pressure exceeds 90 psi.
3. Do install gravity drain on cabinet. See figure 7.
4. Do secure drain line on appliance and at drain outlet. See figure 3.
5. Do allow a minimum of 8 to 10 feet of 3/4" pipe from the outlet of the water filter to the inlet of the water heater. See figure 1.

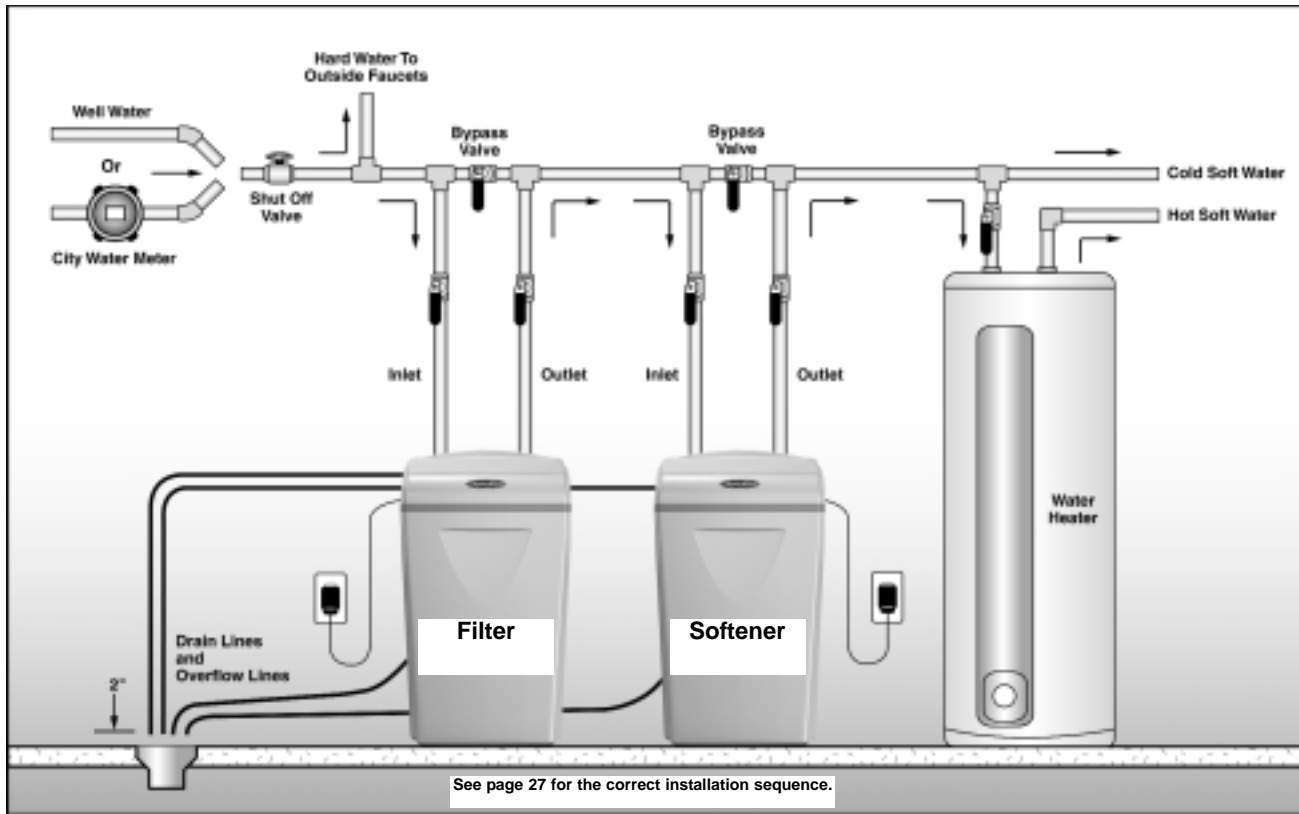
SOME DON'TS

1. Do not install if checklist items are not satisfactory.
2. Do not install if incoming or outlet piping water temperature exceeds 120 degrees Fahrenheit, 80 degree Fahrenheit for 97WB-IF.
Please see specification on page 27.
3. Do not allow soldering torch heat to be transferred to valve components or plastic parts.
4. Do not overtighten plastic fittings.
5. Do not plumb appliance right up against a wall which would deny access to plumbing. See figure 1.
6. Do not install the appliance backwards. Follow arrows on inlet/outlet.
See figure 2.
7. Do not plug the transformer into an outlet that is activated by an on/off switch.
See figure 8.
8. Do not connect the drain and the overflow (gravity drain) together.
See figure 1.

When calling the HelpLine, please have this guide and the serial number available. From 8 am to 5 pm EST, call 1-800-437-8993. Your serial number may be found on top of your valve assembly (See figures 2-3.)

Reference Illustrations

Figure 1 - Installation Guide



Use this diagram as a location and installation guide for your **WaterBoss®97WB-IF**, **WaterBoss®97WB-CF**, and **WaterBoss®WB-ANF**, water conditioners. This diagram applies to all types of installations (i.e. basement, slab, crawl space, outside).

Bypass Valves. To simplify installation and servicing, a one-piece or a three way bypass valve system is recommended when installing your appliance. A bypass system also provides access to untreated water when required (i.e. for lawn and gardening purposes.)

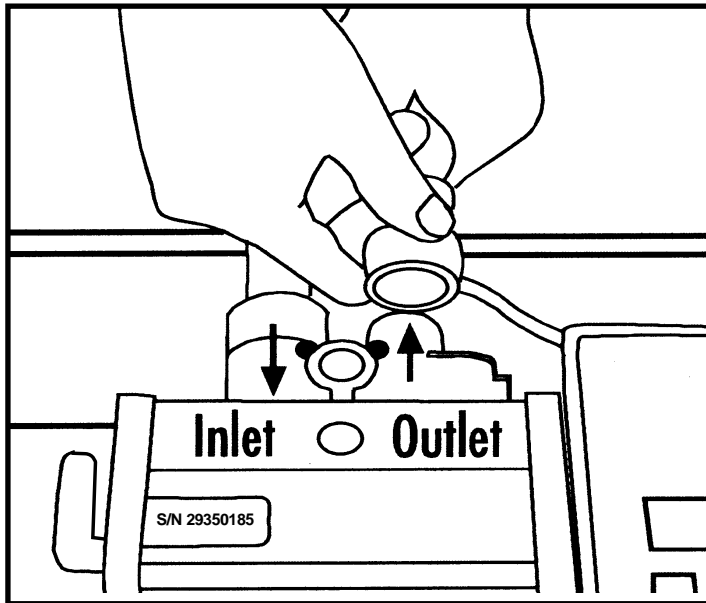
Also, see figures 4 through 6.

Caution: If less than 10 feet of pipe connect the water treatment appliance(s), to the water heater, then a Check Valve must be installed between the water treatment appliance and the water heater. Install the Check Valve as close to the water heater as possible.

When calling the HelpLine, please have this guide and the serial number available. From 8 am to 5 pm EST, call 1-800-437-8993. Your serial number may be found on top of your valve assembly (See figures 2-3.)

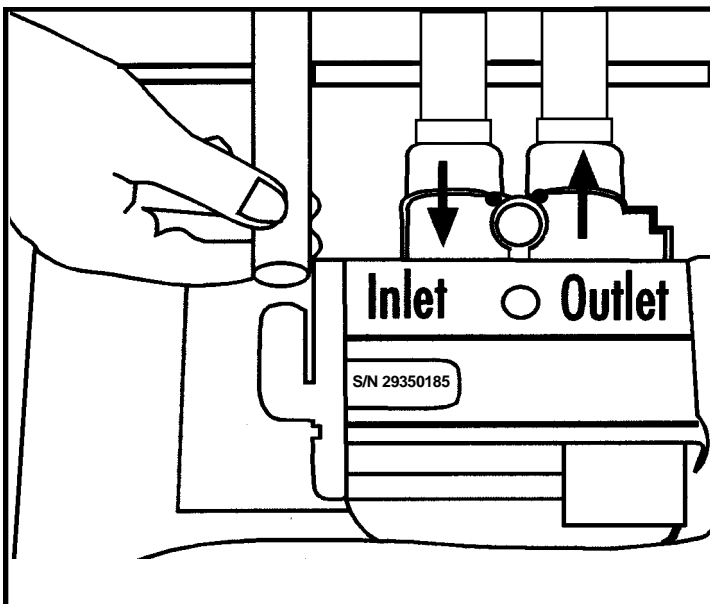
Reference Illustrations

Figure 2



PLUMBING CONNECTIONS

Figure 3



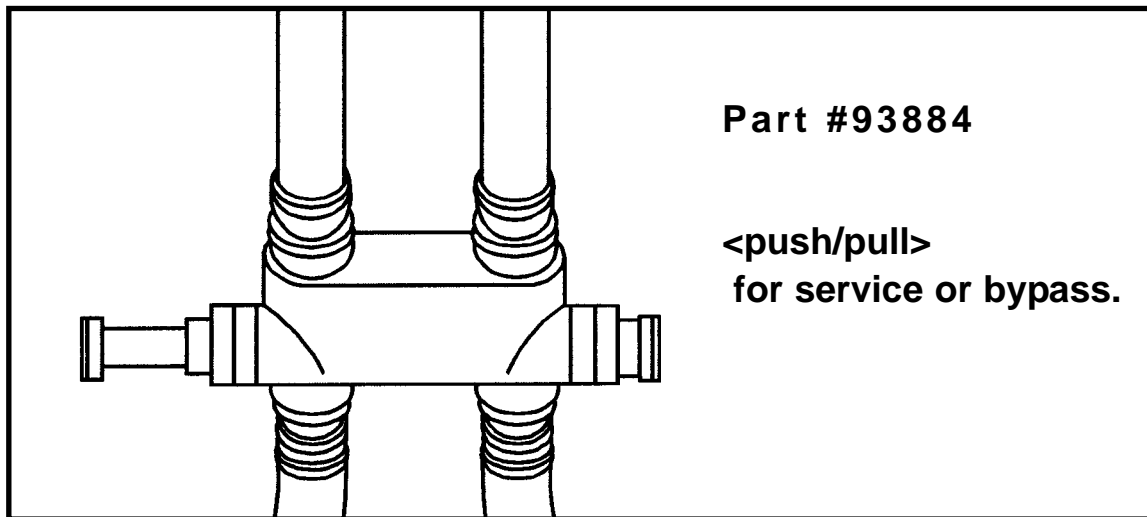
CONNECTING DRAIN LINE

CAUTION! The drain line must not be kinked, crimped or restricted in any way. The drain line should be 1/2" inside diameter and cannot be reduced in size.

When calling the HelpLine, please have this guide and the serial number available. From 8 am to 5 pm EST, call 1-800-437-8993. Your serial number may be found on top of your valve assembly (See figures 2-3.)

Reference Illustrations

Figure 4 Bypass Valves



This part may be available through your local hardware store, plumber or call our HelpLine to order.

Figure 5

In Bypass Position

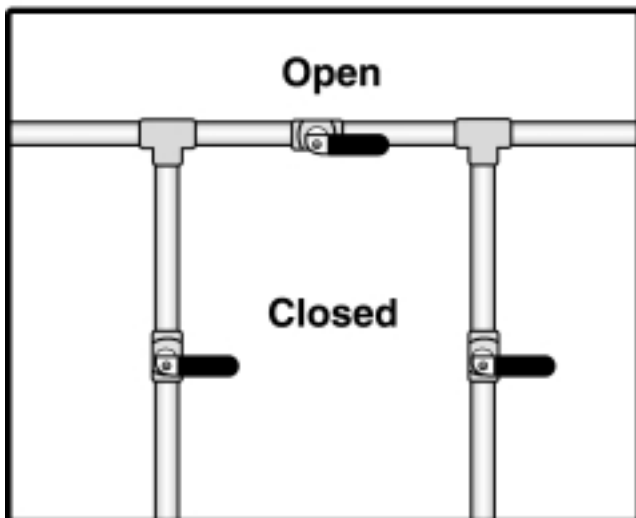
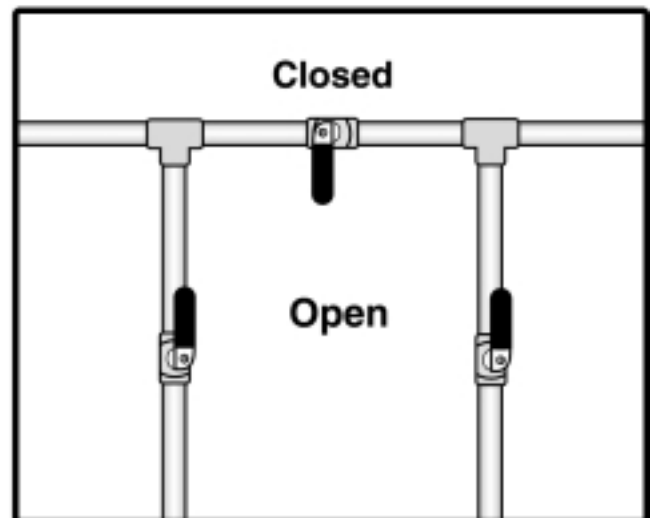


Figure 6

In Service Position



When calling the HelpLine, please have this guide and the serial number available. From 8 am to 5 pm EST, call 1-800-437-8993. Your serial number may be found on top of your valve assembly (See figures 2-3.)

Reference Illustrations

Figure 7

OVERFLOW
CONNECTION

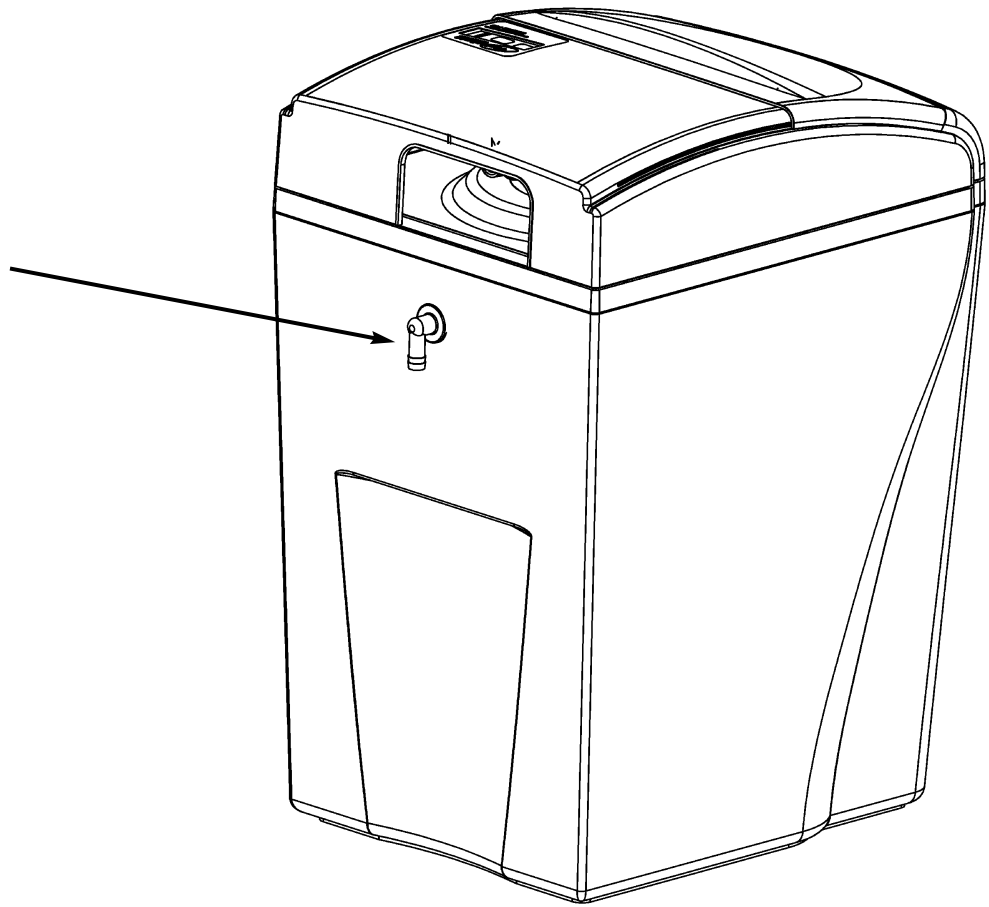
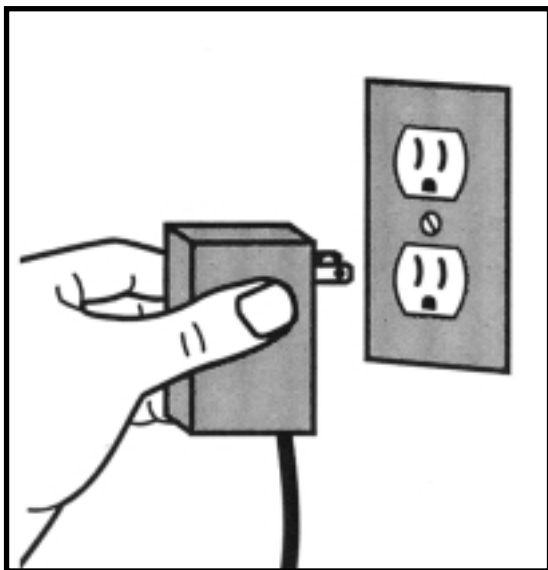


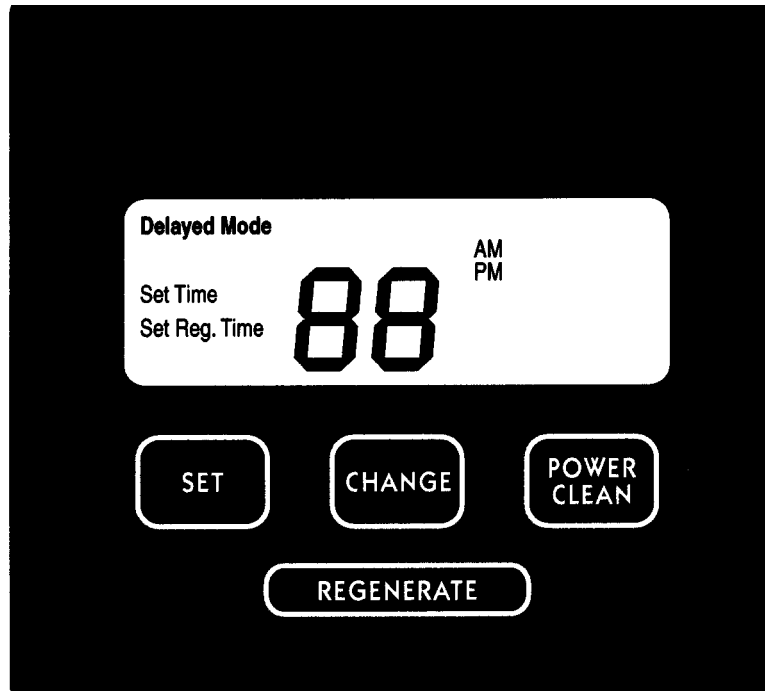
Figure 8



PLUGGING IN TRANSFORMER
Do not plug transformer into an outlet that is controlled by on/off switch.

When calling the HelpLine, please have this guide and the serial number available. From 8 am to 5 pm EST, call 1-800-437-8993. Your serial number may be found on top of your valve assembly (See figures 2-3.)

Figure 9



ADDING POTASSIUM PERMANGANATE TO THE IRON FILTER.

Figure 10



1 Open lid and add three gallons of water.



2 Slowly add 5 lbs. potassium permanganate and stir with paint paddle.



3 Wait 15 minutes and press the Regenerate button.

Cycles

Figure 11

Water by-passes your appliance during regeneration to allow iron and sediment to be washed down the drain. After regeneration, **WaterBoss®** returns to service, providing your home with filtered water.

Regeneration cycles*:

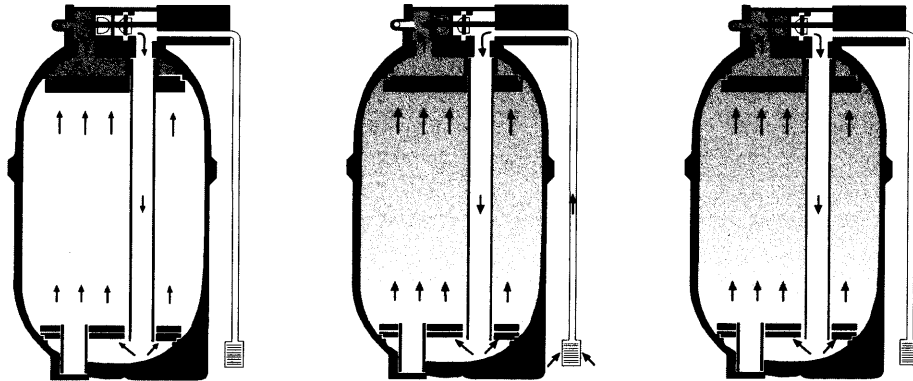
1. First up-flow backwash. A rapid up-flow of water flushes out the media bed.
2. Regeneration. Regenerant is drawn out of the brine cabinet and up through the media tank, cleaning the media bed and releasing accumulated iron and hydrogen sulfide.
3. Slow rinse. A slow up-flow rinse process then flushes out the regenerant and iron.
4. Second up-flow backwash. This up-flow backwash flushes out any remaining regenerant and sediment from cycle 2.
5. Downflow clean water refill. Filtered water is directed to the solution cabinet to prepare the regenerant for the next regeneration sequence.
6. Return to service. Regeneration is complete and the appliance is returned to normal operation.

*NOTE: The regeneration cycles described above only applies to the 97WB-IF.

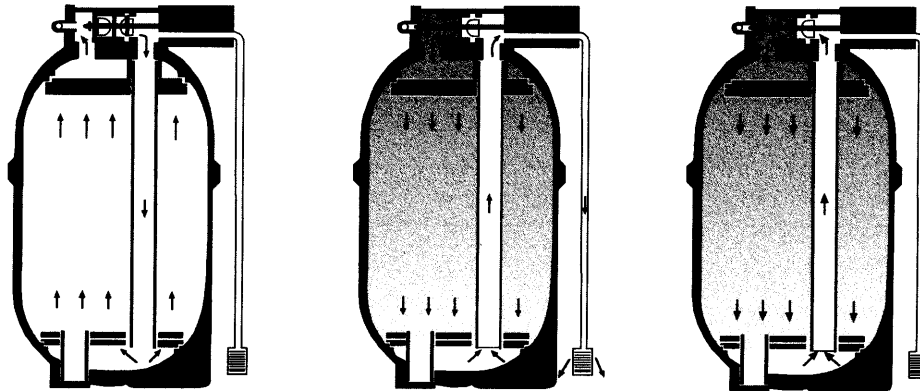
When calling the HelpLine, please have this guide and the serial number available. From 8 am to 5 pm EST, call 1-800-437-8993. Your serial number may be found on top of your valve assembly (See figures 2-3.)

Cycles - Iron Filter Only

Figure 11

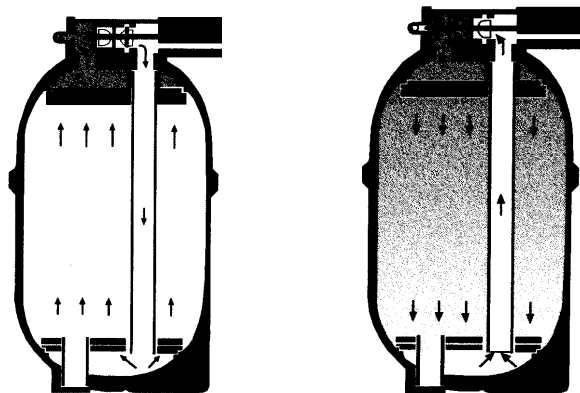


1 First up-flow backwash 2 Regenerant Draw 3 Slow Rinse



4 Second up-flow 5 Downflow clean 6 Return to service

Cycles - Carbon & Acid Neutralizing Filters Only



Backwash Return To Service

Installation And Start-Up Procedures

Each **WaterBoss**® water filter includes water test strips and 8' of drain line and a drain fitting.

1. Placement: Place your **WaterBoss**® appliance in desired location. Turn off electricity and water supply to water heater. Make sure inlet/outlet and drain connections meet the applicable local codes. Check arrows on valve to be sure water flows in proper direction. See figures 1, 2, & 3.

CAUTION: DO NOT PLUMB APPLIANCE IN BACKWARD.

2. Drain Line: must be a minimum of 1/2"-5/8" I.D. tubing and should make the shortest run to a suitable drain. The drain line may be elevated up to 8 feet from the discharge on the appliance as long as the water pressure in your system is 40 psi or more. If drain line is 25' or longer, increase drain line to 5/8" I.D. Also, the end of the drain line must be equal in height or lower than the control valve. See figure 1. All overhead drains for filter installations must be 3/4" I.D.

3. Flushing: Before placing your **WaterBoss**® appliance in service, it is very important to flush the cold water lines of any debris. Turn on water supply, open the nearest cold water tap and let the water run for 2 to 3 minutes until the water flows clear. Then put the by-pass in the Service position. See figures 4 through 6.

4. Check Leaks. Close faucet and check for leaks. If leaks are found, turn off main water supply and open the nearest cold water faucet to depressurize lines. Close faucet to eliminate siphoning action. Repair leaks. Turn on water supply and electricity to water heater. Place the bypass valve in the Service position. See figure 6.

5. Connect Overflow Line. The overflow line must end at a drain that is at least 3" lower than the bottom of the overflow fitting. It is a gravity line and cannot be run overhead. See figure 7.

6. Complete The Installation. Open a cold water tap and allow the appliance to flush for 20 minutes or until approximately 72 gallons has passed through the appliance per NSF requirements.

7. Plug In Transformer. See figure 8.

When calling the HelpLine, please have this guide and the serial number available. From 8 am to 5 pm EST, call 1-800-437-8993. Your serial number may be found on top of your valve assembly (See figures 2-3.)

97WB-CF Carbon Filter Start-Up Procedures

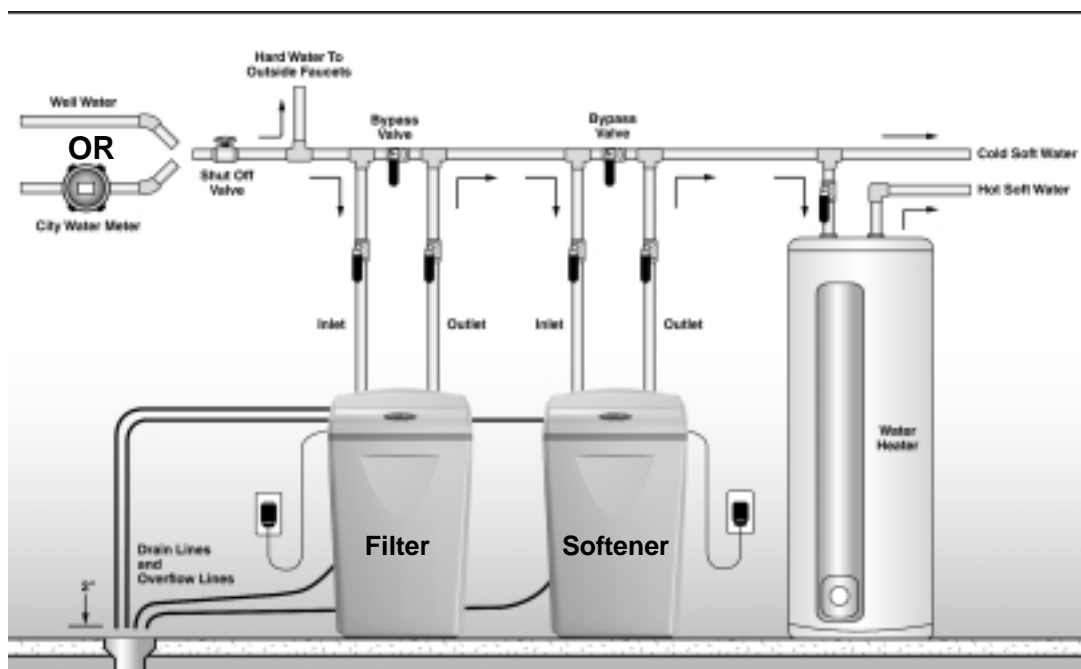
Your waterBoss Carbon filter will backwash every one to four days. You select the frequency based on local conditions. You will need to set the time of day and the desired time of regeneration by following the procedure outlined on page 17 of this manual.

IMPORTANT: Because the WB-CF is capable of treating a combination of undesirable constituents in the water (chlorine, taste and odor), it is important that the filter be applied within the operating limits outlined in this manual. Failure to comply with these specifications will cause poor backwash results and possibly a malfunction of the control valve.

INSTALLATION TIP: The granular activated carbon in this filter has been shipped dry. It is necessary to soak this filter media for twenty-four hours to prevent media loss to drain during backwash. Follow the installation procedure on page 12, but do not plug in the transformer. After 24 hours, plug in the transformer and program the controller as outlined on page 17 of this manual. Press and hold the regenerate button until the controller indicates 01 (flashing). After 7 minutes, the controller will return to service mode and display a number from 01 to 04 days to regeneration.

NOTE: This filter should be installed after the pressure tank or water meter, before the water heater or any WaterBoss water softener appliance unless otherwise recommended. (See illustration). A minimum 3/4" pipe is required for proper function of the filter. It is also important to examine the inlet piping to make sure the pipe is not plugged with lime. If the piping is plugged, it must be cleaned or replaced.

Figure 12



97WB-AF Acid Neutralizing Filter Start-Up Procedures

Your WaterBoss Acid Neutralizing Filter may be programmed to regenerate every one or two days. You select the frequency based on local conditions. You will have to set the time of day and the desired time of regeneration by following the procedure outlined on page 17 of this manual.

IMPORTANT: Because the WB-AF is capable of elevating a low pH condition in the water, it is important that the filter be applied within the operating limits outlined in this manual. Failure to comply with these specifications will cause poor backwash results and possibly a malfunction of the control valve. Additionally, it will be necessary to add two to five pounds of the neutralizing media to the filter tank annually. The media slowly dissolves and thereby corrects the corrosive characteristic of the water. The hardness will increase by two to four grains per gallon. Check the total hardness of the water after start-up of the neutralizer and set your water softener accordingly.

INSTALLATION TIP: Before placing this filter in service, it will be necessary to backwash the filter to remove media fines in the filter bed. To backwash the filter, push and hold the regenerate button until the controller indicates cycle 01 (flashing). After 7 minutes, the controller will return to the service mode and display 01 or 02 (solid). Retest the hardness before the water enters the softener and reset the hardness setting of the softener. Typically, hardness will increase by two to four grains after passing through the neutralizer.

NOTE: This filter should be installed after the pressure tank or water meter, before the water-heater or any WaterBoss water softener appliance unless otherwise recommended. (See illustration). A minimum 3/4" pipe is required for proper function of the filter. It is also important to examine the inlet piping to make sure the pipe is not plugged with lime or iron. If the piping is plugged, it must be cleaned or replaced.

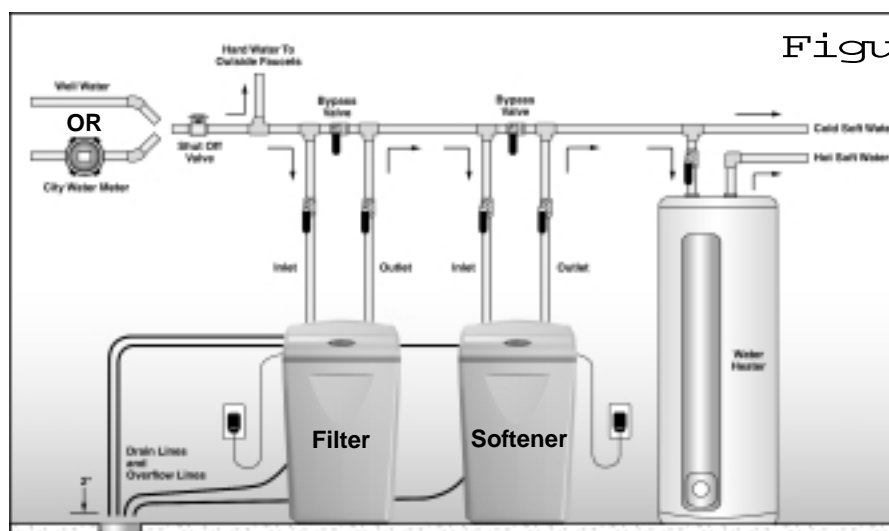


Figure 13

97WB-IF Iron Filter

Start-Up Procedures

Your WaterBoss Iron Filter may be programmed to regenerate every one to fourteen days. You select the frequency based on the amount of iron in the water and the number of people in the household. You will have to set the time of day and the desired time of regeneration by following the procedure outlined on page 17 of this manual. See the WaterBoss Iron Filter Application Chart on page 16.

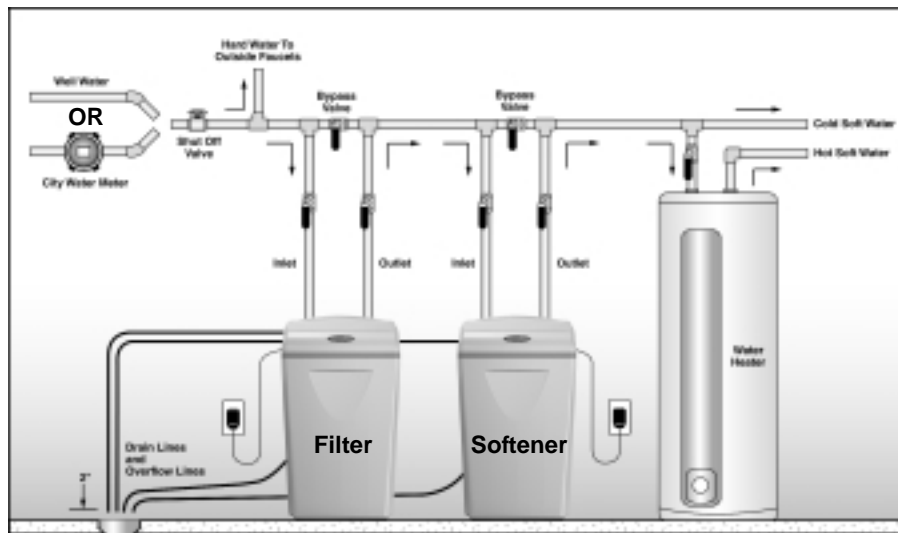
IMPORTANT: Because the WB-IF is capable of treating a combination of undesirable constituents in the water (iron and/or hydrogen sulfide), it is important that the filter be applied within the operating limits outlined in this manual. Failure to comply with these specifications will cause poor backwash results and possibly a malfunction of the control valve.

INSTALLATION TIP: Before placing the filter in service, add three gallons of water to the cabinet. See page 9. Make sure the KMnO_4 has been thoroughly mixed as indicated below. To start a regeneration, push and hold the immediate recharge button until the controller indicates cycle 01 (flashing). After 45 minutes, the filter will return to service mode and display from 01 or 14 (solid).

NOTE: This filter should be installed after the pressure tank or water meter, before the water-heater or any WaterBoss water softener appliance unless otherwise recommended. (See illustration). A minimum 3/4" pipe is required for proper function of the filter. It is also important to examine the inlet piping to make sure the pipe is not plugged with lime or iron. If the piping is plugged, it must be cleaned or replaced.

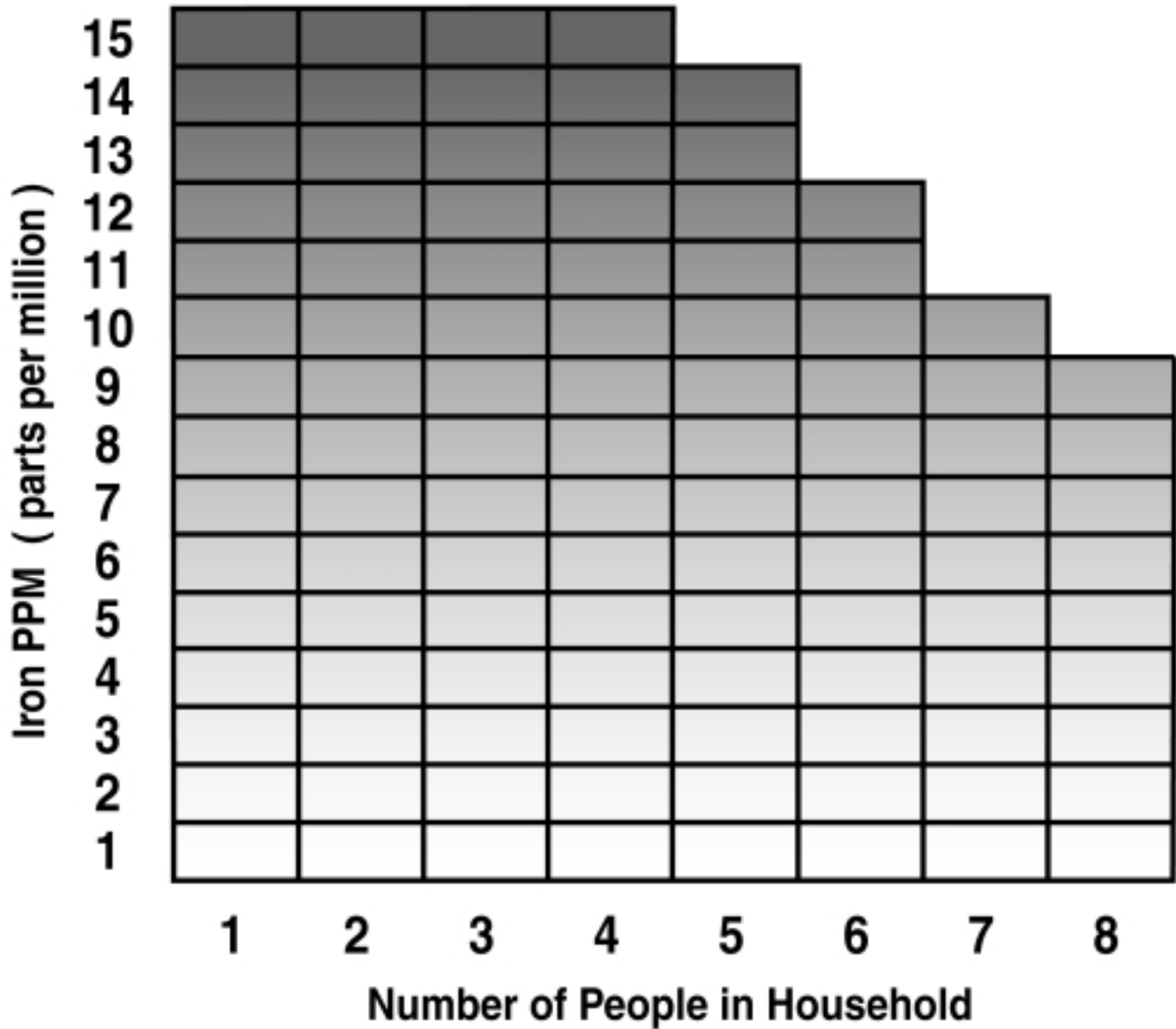
CAUTION: When adding the Potassium Permanganate (KMnO_4), use care when opening the container and pouring it into the cabinet. Stir the KMnO_4 until the color is a dark walnut and stir every two weeks. Follow the safety precautions on the container. Coarse granular Potassium Permanganate is recommended for this filter appliance (P/N 97804). Fine granular Potassium Permanganate can be drawn into the filter as a solid rather than a liquid. For further operating and handling instructions, refer to the KMnO_4 Potassium Permanganate product label.

Figure 14



WaterBoss Iron Filter Application Chart

Figure 15



Setting The Controller:

To ensure that your WaterBoss Filter operates properly, follow the setting instructions below. For the iron filter, refer to the selection chart on page 16.

To set the desired frequency of regeneration, or backwash, press and hold the SET button for 3 seconds. When "01" is displayed, release the set button and press and release the change button to set the desired frequency. Press the set button to return to the main screen and the number you selected will be displayed. This indicates the number of days until the next regeneration or backwash.

To set the time of day and time of regeneration/backwash, press and hold the SET and CHANGE buttons simultaneously for three seconds. Release when the number "12" appears in the display. The number 12 indicates standard time in AM or PM. To change to military time, press CHANGE and the "12" will change to "24". For military time, be sure to set the correct time of day after 12 noon. EXAMPLE: 2:00 pm will be set as 14:00.

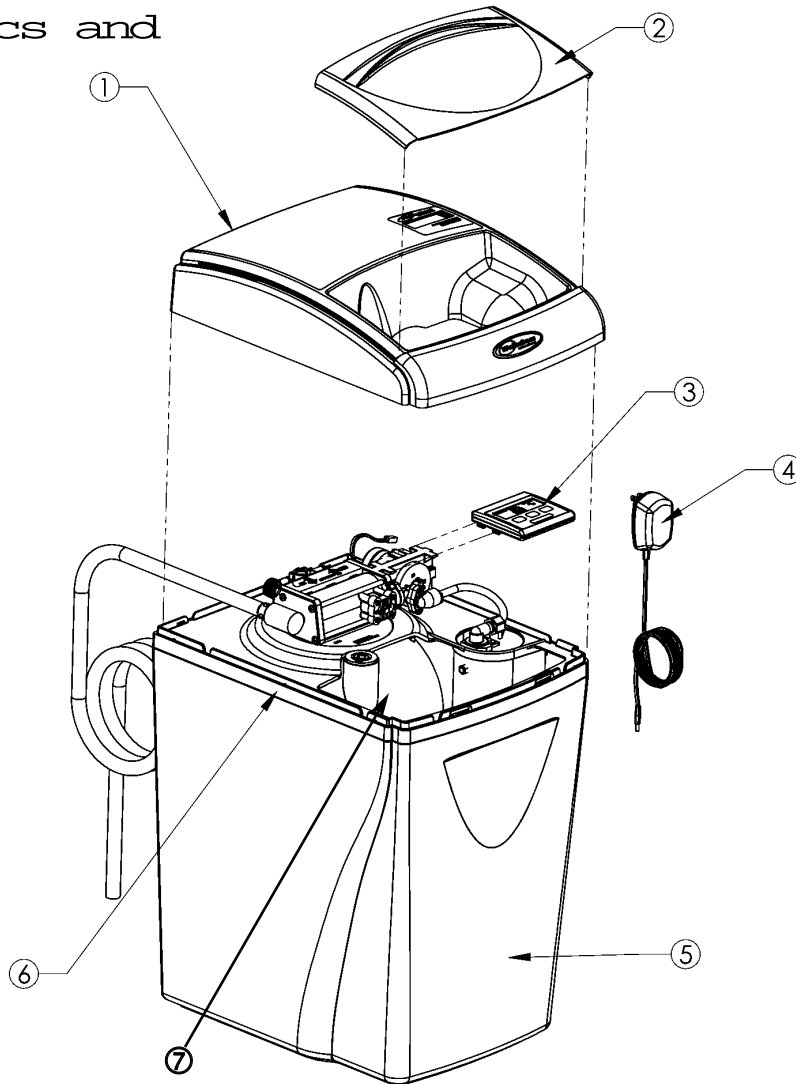
To set the time (to the nearest hour) press and release the "SET" button to change the hour AM or PM, the display will read "set time".

To set the time of regeneration/backwash, press the "SET" button to toggle to the final setting. The display will read, "set reg. time" 02 AM. This is 2:00 AM. Press the "CHANGE" button to select the desired regeneration time. Note: if you have a softener installed with the WaterBoss filter, be sure to stagger the regeneration times. Set the softener to regenerate first, followed by the filter.

Press the SET button to save the program you have selected.

Care, Maintenance and Parts

Figure 16 -
Electronics and
Cabinet

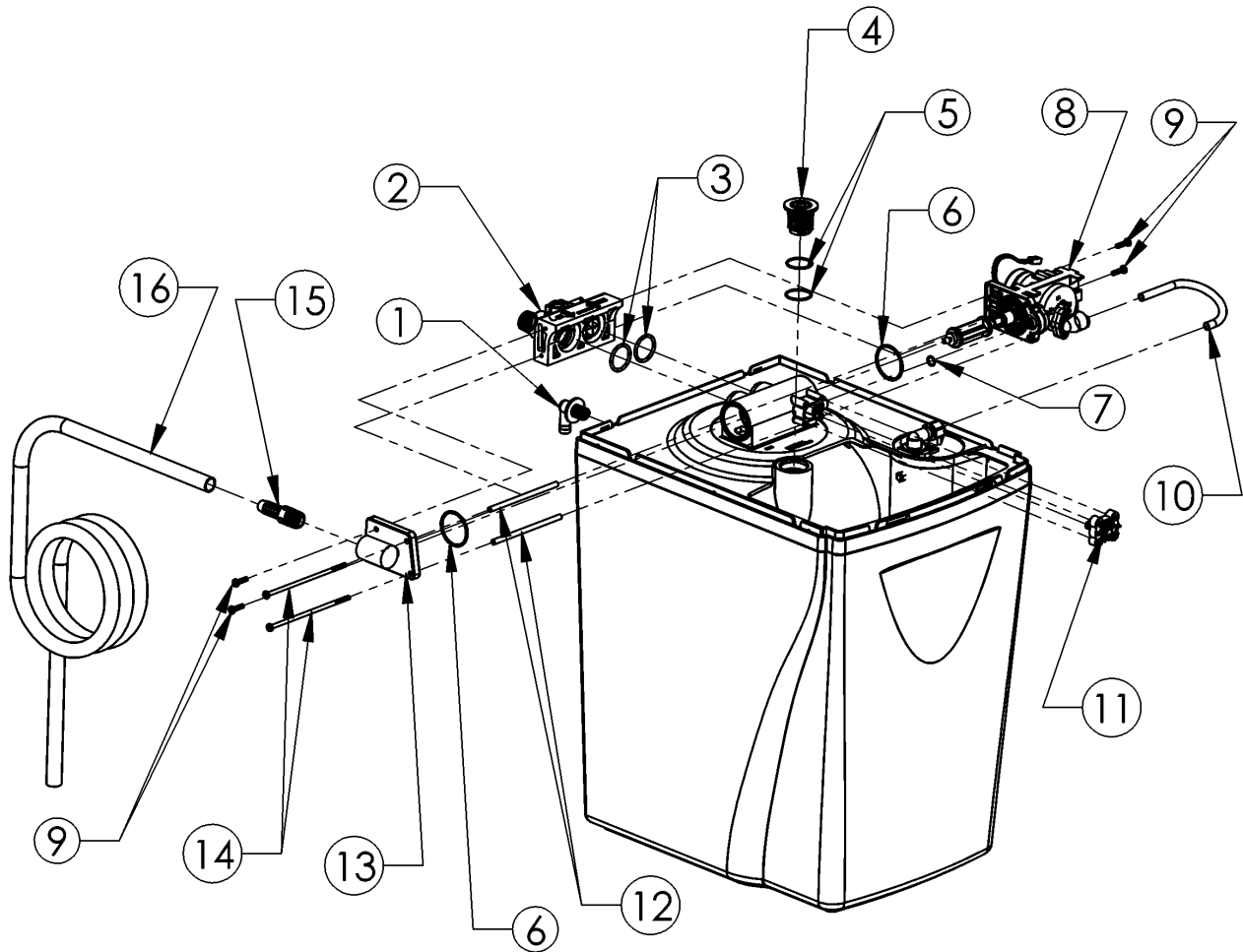


PART#	DESCRIPTION	QUANTITY
1 54306	Salt Port Lid	1
2 54324	Valve Cover Assembly	1
3 54513-IF	Computer Control Assembly - Iron Filter	1
54513-CF	Computer Control Assembly - Carbon Filter	1
54513-AF	Computer Control Assembly - Acid Neutralizing Filter	1
4 93245	12V Transformer/Power Cord	1
5 54303	Cabinet	1
6 54305	Support Panel	1
7 97506	Media Tank, empty with fill plug for IF & AF	1
97509	Media Tank, empty with fill plug for CF only	1

When calling the HelpLine, please have this guide and the serial number available. From 8 am to 5 pm EST, call 1-800-437-8993. Your serial number may be found on top of your valve assembly (See figures 2-3.)

Care, Maintenance and Parts

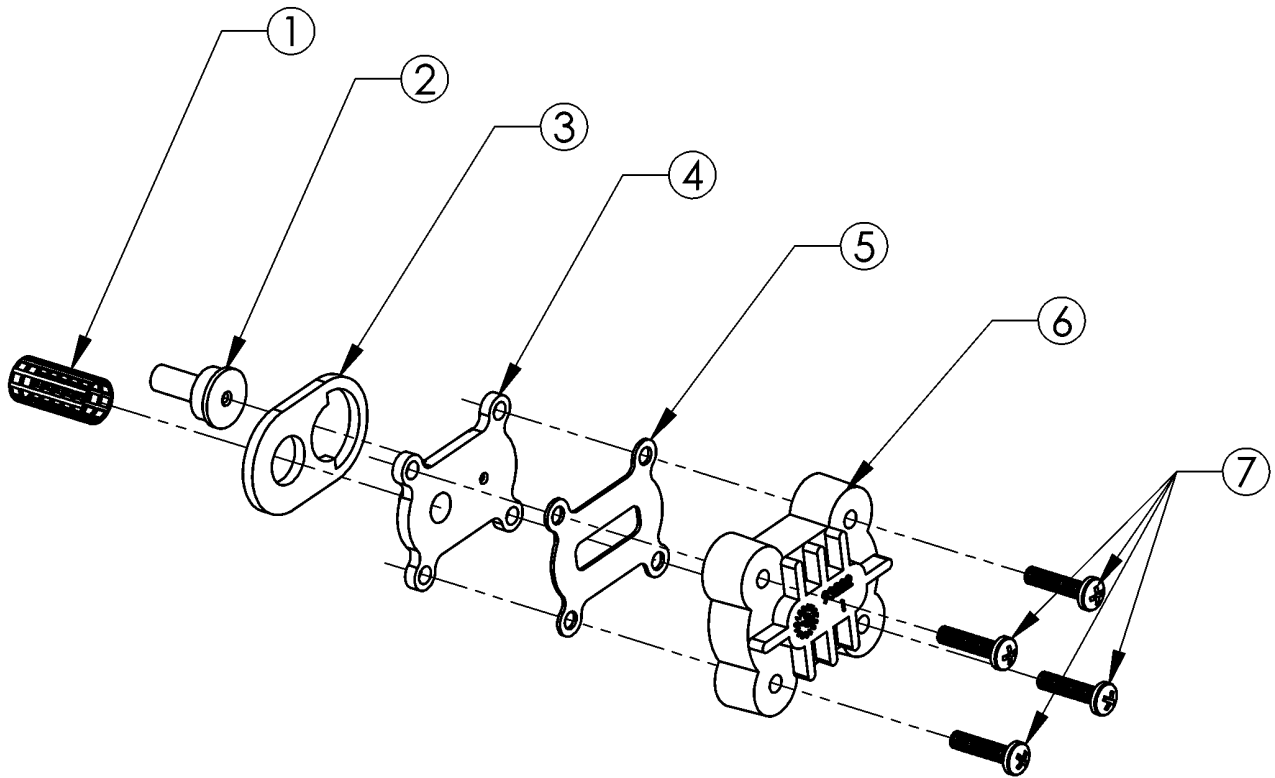
Figure 17 - Cabinet and Assemblies



	PART#	DESCRIPTION	QUANTITY
1	CO700A	Cabinet Overflow	1
2	93505	I/O Adapter Assembly	1
3	93838	O-Ring	2
4	93281	Fill Plug	1
5	93272	O-Ring	2
6	93808	O-Ring	2
7	90828	O-Ring	1
8	95301T-JG	Drive End Cap Assembly, Iron Filter	1
	95302T-BWO	BWO, Carbon and Acid Neutralizing Filters	1
9	93870	Screw	4
10	93848	3/8" Brine Line (7")	1
11	93501	Injector Assembly	1
12	93835	Sleeve	2
13	90614-5.0	Drain End Cap Assembly, Iron and Acid Neutralizing Filters	1
	90614-3.0	Drain End Cap Assembly, Carbon Filter	1
14	93809	Screw	2
15	V185	Drain Fitting, 1/2" MNT x Barb	1
16	93842	Drain Line	1

Care, Maintenance and Parts

Figure 18 - Injector Assembly

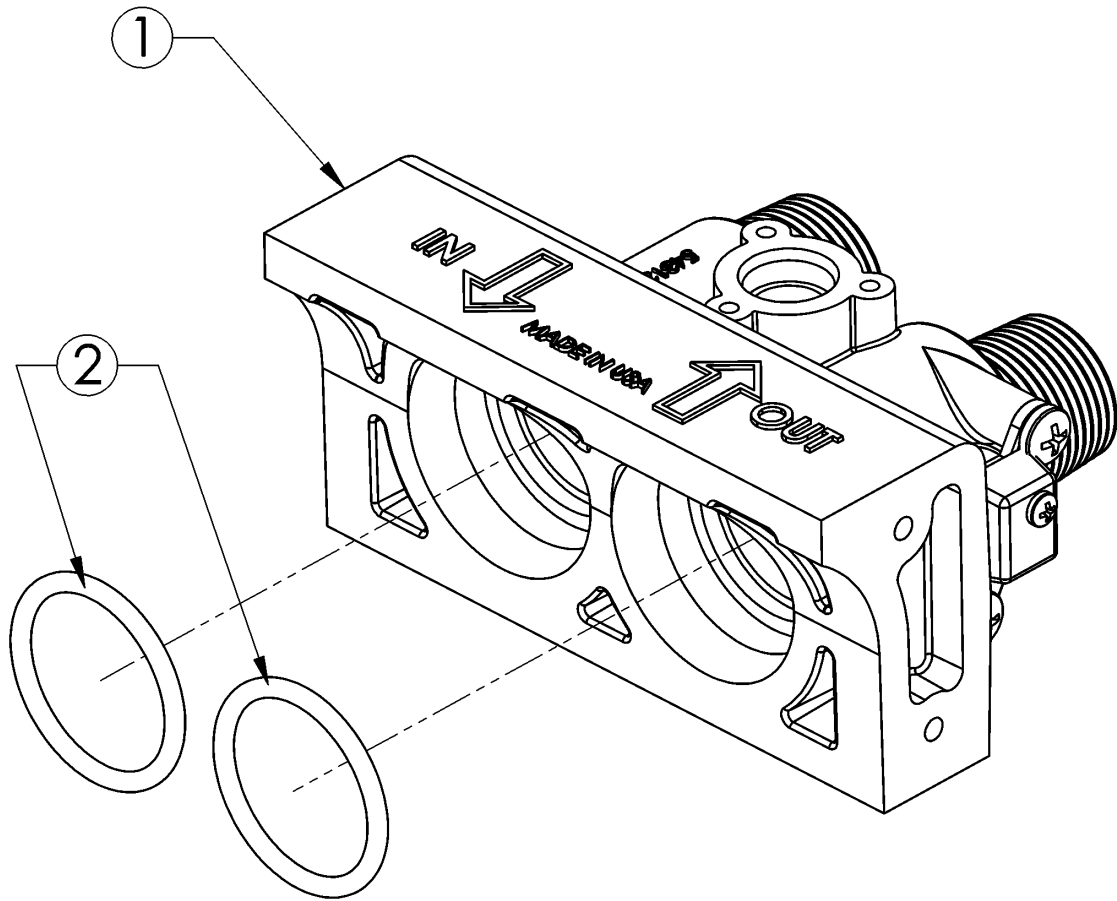


ITEM NO.	QTY.	PART NO.	DESCRIPTION
1	1	93810	Injector Screen
2	1	93223	Injector Throat
3	1	93220	Injector Seal (Thick)
4	1	93221	Injector Nozzle
5	1	93232	Top Injector Seal (Thin)
6	1	93222	Injector Cap
7	4	90807	Screw

When calling the HelpLine, please have this guide and the serial number available. From 8 am to 5 pm EST, call 1-800-437-8993. Your serial number may be found on top of your valve assembly (See figures 2-3.)

Care, Maintenance and Parts

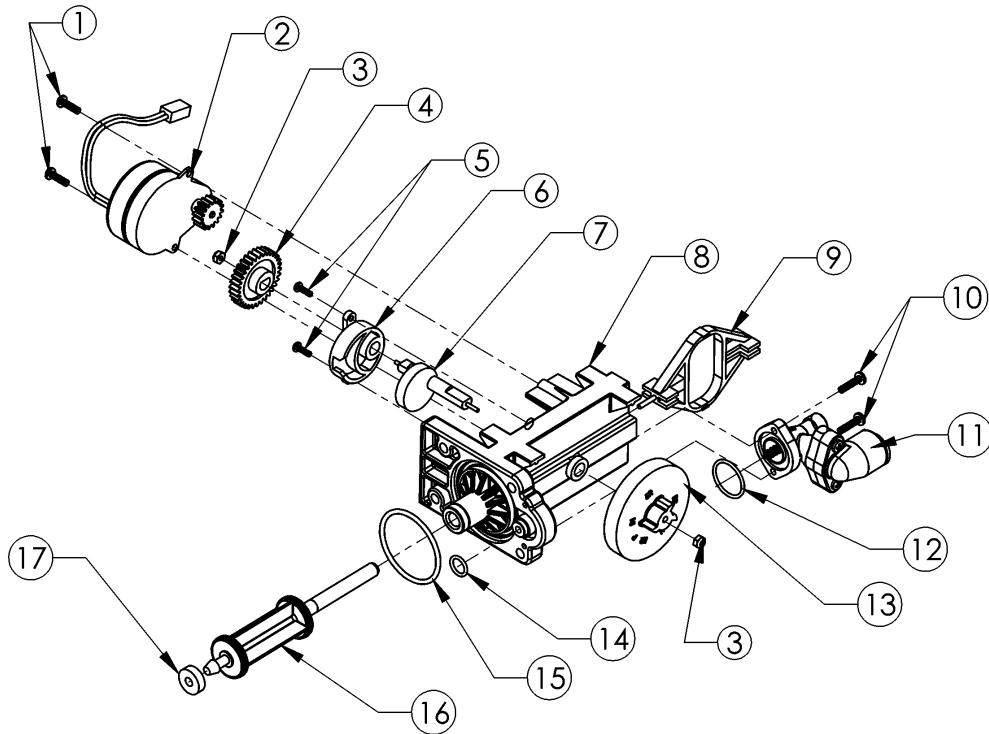
Figure 19 - I/O Adapter Assembly



	PART#	DESCRIPTION	QUANTITY
1	54313	3/4" IO Adapter	1
2	93838	"O" Ring	2

Care, Maintenance and Parts

Figure 20 - Drive End Cap Assembly
(Iron Filter Only)



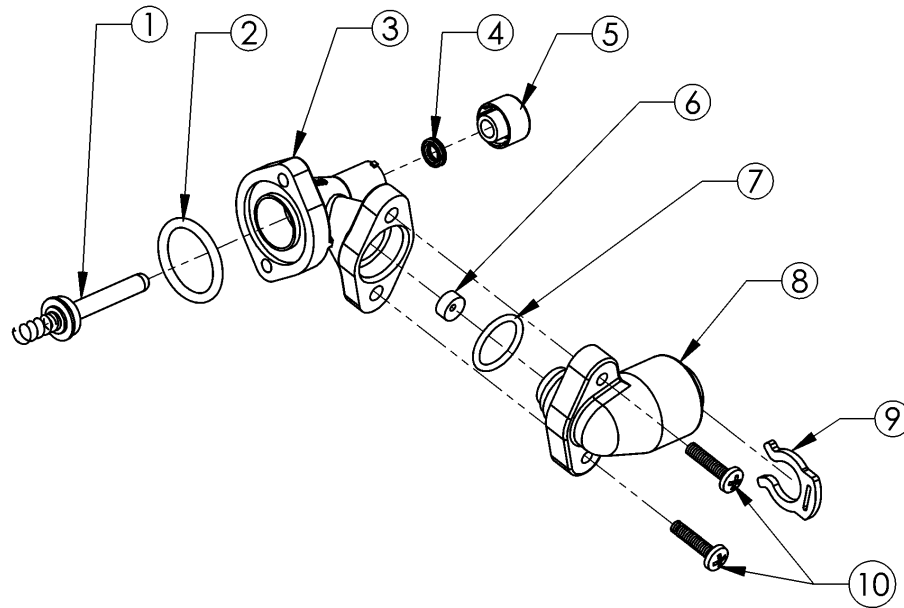
ITEM NO.	QTY.	PART NO.	DESCRIPTION	ITEM NO.	QTY.	PART NO.	DESCRIPTION
1	2	90802	Screw	10 *	2	90818	Screw
2	1	90217	Drive Motor	11 *	1	93601-JG	Brine Valve Housing Assembly
3	2	93891	1/4" Hex Nut	12 *	1	90821	O-Ring
4	1	93238	Drive Gear	13	1	95521	Magnet Disk Assembly
5	2	90809	Screw	14	1	90828	O-Ring
6	1	93219	Piston Slide Cam Cover	15	1	93808	O-Ring
7	1	93217	Piston Slide Cam	16	1	93522-A	Drive Piston Assembly
8	1	93583	Drive End Cap	17	1	93839	Drain Gasket
9	1	93216	Piston Slide				

* Not available on AF and CF models.

When calling the HelpLine, please have this guide and the serial number available. From 8 am to 5 pm EST, call 1-800-437-8993. Your serial number may be found on top of your valve assembly (See figures 2-3.)

Care, Maintenance and Parts

Figure 21 - Brine Valve Housing Assembly, Iron Filter Only

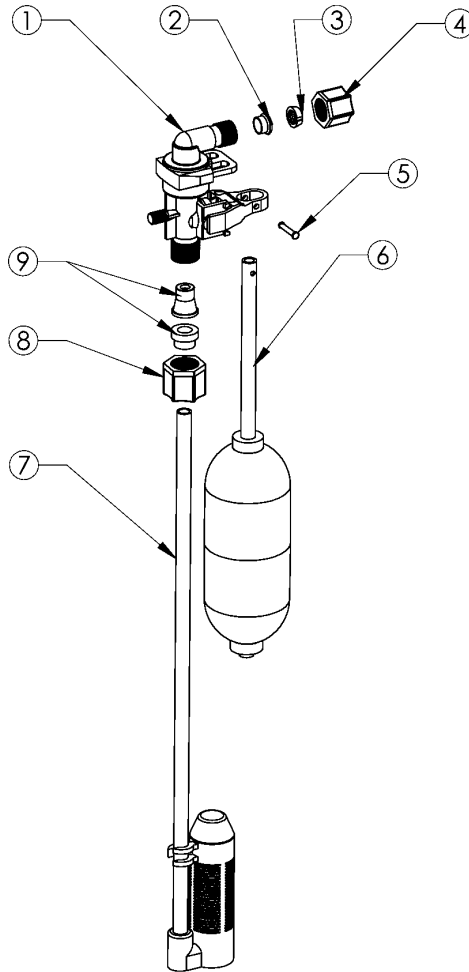


ITEM NO.	QTY.	PART NO.	DESCRIPTION
1	1	93620	Piston Assembly (includes O-ring & Spring)
2	1	90821	O-Ring
3	1	93260	Housing
4	1	93878	Quad Ring
5	1	93254	Quad Ring Retainer
6	1	90843	.5 gpm Flow Control
7	1	93805	O-Ring
8	1	93243-JG	Housing Cap Assembly (John Guest)
9	1	200199	3/8" Locking Clip
10	2	90818	Screw

When calling the HelpLine, please have this guide and the serial number available. From 8 am to 5 pm EST, call 1-800-437-8993. Your serial number may be found on top of your valve assembly (See figures 2-3.)

Care, Maintenance and Parts

Figure 22 - Safety Shutoff Assembly



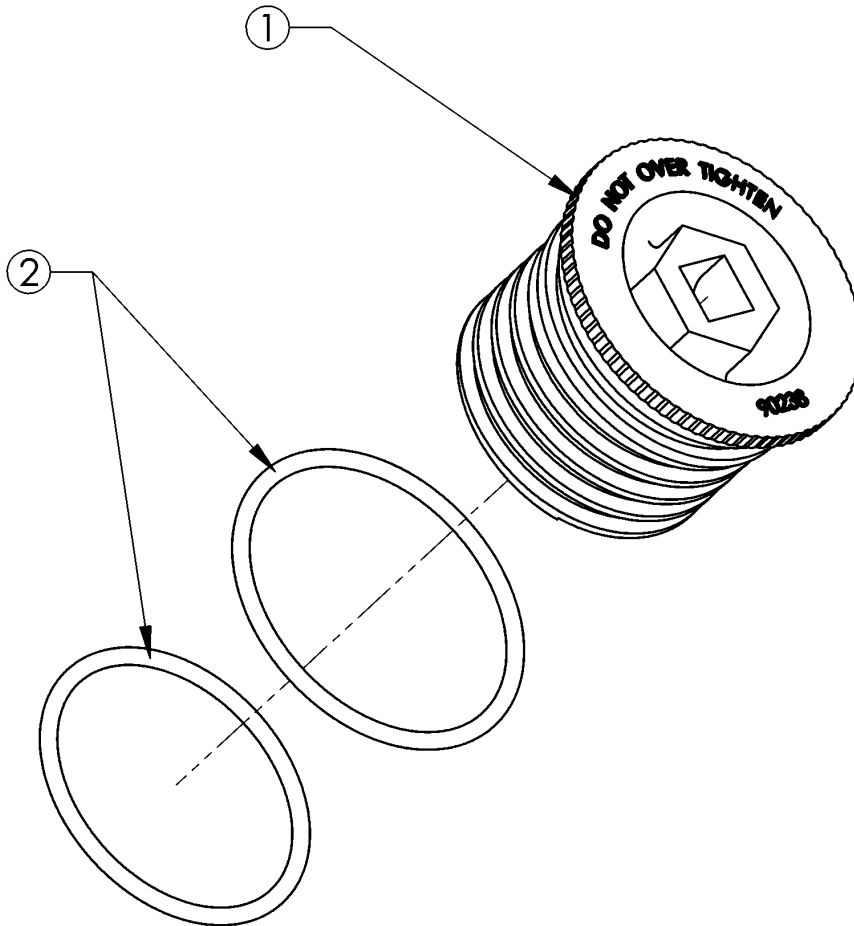
PART#	DESCRIPTION	QUANTITY
1 54226	Safety Shutoff Valve	1
2 *	3/8" Retainer Sleeve	1
3 *	3/8" Plastic Gripper	1
4 *	3/8" Nut	1
5 *	Wrist Pin	1
6 10700-IF	Float Assembly	1
7 H5785-IF	Air Check Assembly	1
8 *	3/8" Nut	1
9 H4656	1/2" x 3/8" Sleeve Gripper Set	1
54526	Safety Shutoff Assembly	

*Included with 54226

When calling the HelpLine, please have this guide and the serial number available. From 8 am to 5 pm EST, call 1-800-437-8993. Your serial number may be found on top of your valve assembly (See figures 2-3.)

Care, Maintenance and Parts

Figure 23 - Fill Plug Assembly



ITEM NO.	QTY.	PART NO.	DESCRIPTION
1	1	93281	Fill Plug
2	2	93272	O-Ring

When calling the HelpLine, please have this guide and the serial number available. From 8 am to 5 pm EST, call 1-800-437-8993. Your serial number may be found on top of your valve assembly (See figures 2-3.)

Troubleshooting

Problem	Cause	Solution
Read-out lights do not glow.	Defective circuit board (fig. 10).	With 12 VAC present at controller, replace circuit board.
Filter stays in regeneration. Cycle numbers remain flashing.	Computer control not attached properly.	Make sure computer control is pushed all the way onto drive end cap.
	Foreign object in valve body.	Remove foreign objects from valve body.
	Broken valve assembly. Motor running. Magnet disc not turning (page 22).	Repair drive end cap.
Excess water in regenerant tank. Should be approximately 6 - 8" for Iron Filter only.	Restricted, frozen or pinched drain line.	Remove restriction, thaw or straighten drain line.
	Plugged regenerant line, regenerant line flow control or air check (page 24).	Clean flow control, air check and regenerant line. Clean any sediment from brine cabinet.
	Plugged injector assembly (page 20).	Clean or replace injector. Replace throat if removed.
	Sticking regenerant refill valve.	Remove brine valve. Lubricate piston with silicone grease and reassemble.
Not regenerating in proper sequence.	Magnet disc defective.	Replace magnet disc.
	Defective position sensor.	Replace control.
Purple water.	Plugged Injector.	Clean injector screen, nozzle and throat. See figure 18 page 20.
	Low water pressure.	Maintain min. pressure of 30 psi. See specifications page 27.
	Drain line or flow control restricted.	Remove restrictions.
	Regenerant line restricted or crimped.	Remove restrictions, replace if crimped.
	Excessive amount of water in brine cabinet.	Verify correct water level relative to salt setting. Check lines for loose connections.
	Intermittent pressure drop from feed source.	Verify adequate pressure and volume of water supply. See specifications page 27.

When calling the HelpLine, please have this guide and the serial number available. From 8 am to 5 pm EST, call 1-800-437-8993. Your serial number may be found on top of your valve assembly (See figures 2-3.)

Filter Specifications

MODEL #	97WB-IF	97WB-CF	97WB-AF
Maximum compensated hardness (grains)	NA	NA	NA
Maximum ferrous iron reduction	15 ppm	NA	NA
Minimum pH	7	NA	6.3
Media type and amounts	Greensand .7 cu. ft.	Carbon .7 cu. ft.	Calcite/Corosex .7 cu. ft.
Salt usage (lbs.) / Capacity	2.8 oz. Potassium Permanganate per regeneration	Backwash only	Backwash only
Maximum water temperature	80°F	120°F	120°F
Mineral tank size	10.5 X 21" I.D.	10.5 X 21" I.D.	10.5 X 21" I.D.
Peak flow rate / psi drop	7 gpm/15	7 gpm/15	6 gpm/15
Pressure drop @ service flow rate of 4 gpm	9	9	9
Maximum flow rate to drain during regeneration (backwash gpm)	5.0	3.0	5.0
Water Pressure (minimum-maximum psi)	30 / 120	30 / 120	30 / 120
Minimum water volume required (gpm)	5	5	5
Controller type	4 Button	4 Button	4 Button
Regeneration/Backwash time (minutes)	43.5	7	7
Water used per regeneration (gallons)	66	21	35
Frequency of regeneration (days)	1-14	1-4	1 or 2
Potassium Permanganate Storage	5 lbs.	NA	NA
Height (in.)	30.75"	30.75"	30.75"
Footprint (in.)	14.75" X 18.75"	14.75" X 18.75"	14.75" X 18.75"
Electrical Rating	12VAC, 1 phase 60 Hz	12VAC, 1 phase 60 Hz	12VAC, 1 phase 60 Hz
Plumbing Connections	3/4" MPT	3/4" MPT	3/4" MPT
Shipping Weight - Approximate (lbs.)	89 lbs	75 lbs	125 lbs

Note: The iron filter operates in the same manner as the WaterBoss Softeners, but with manganese greensand in place of the super fine mesh media. The filter uses a potassium permanganate (KMnO₄) solution for regeneration instead of salt regenerant. In service, the filter media aids in oxidizing the iron, manganese and/or hydrogen sulfide to a solid particle, trapping it in the filter bed.

Install before your water conditioner. WaterBoss Model 97 WB-IF Iron Filter automatically reduces iron, Hydrogen Sulfide and iron bacteria.

Install before your water conditioner. WaterBoss Model 97 WB-CF Carbon Filter with the activated carbon filtering bed, chlorine taste and odor are automatically reduced.

Note: This filter can be installed after water conditioner in special situations. Call HelpLine for specific applications.

Install before your water conditioner. WaterBoss Model 97 WB-AF Acid Neutralizing Filter automatically adjusts low pH water. This will increase the water hardness by 2-4 grains.

When calling the HelpLine, please have this guide and the serial number available. From 8 am to 5 pm EST, call 1-800-437-8993. Your serial number may be found on top of your valve assembly (See figures 2-3.)

Limited Warranty

To Whom Warranty is Extended

This warranty is issued to the original owner at the original location site and is not transferable to other sites or to subsequent owners of the system.

TO PLACE THE EQUIPMENT UNDER WARRANTY, THE WARRANTY REGISTRATION CARD MUST BE COMPLETED AND RETURNED BY THE ORIGINAL OWNER TO **WaterBoss®** WITHIN 30 DAYS OF INSTALLATION.

Coverage

This limited warranty covers the **WaterBoss®** systems delivered to the original owner at the original location when the system is purchased for personal, family, or household use. It is intended to cover defects occurring in workmanship or materials or both.

Warrantor's Performance and Length of Limited warranty - **WaterBoss®** warrants that upon receipt from the original owner of any mechanical or electronic part which is found to be defective in materials or workmanship, **WaterBoss®** will repair or replace the defective item for 3 years from date of original installation.

WaterBoss® further warrants that upon receipt from the original owner of any **WaterBoss®** media tank / valve body, brine cabinet, found to be defective in material or workmanship, **WaterBoss®** will repair or replace the defective item for 10 years from date of original installation.

All defective parts must be returned, along with the equipment serial number and date of original installation, to **WaterBoss®** PREPAID, and replacement parts will be returned by **WaterBoss®** to the original owner FREIGHT COLLECT.

FURTHER EXCLUSIONS AND LIMITATIONS ON WARRANTY

THERE ARE NO WARRANTIES OTHER THAN THOSE DESCRIBED IN THIS WARRANTY INSTRUMENT.

This warranty does not cover any service call or labor costs incurred with respect to the removal and replacement of any defective part or parts. **WaterBoss®** will not be liable for, nor will it pay service call or labor charges incurred or expended with respect to this warranty.

In the event the water supply being processed through this product contains bacterial iron, algae, sulphur, tannins, organic matter or other unusual substances, then, unless the system is represented as being capable of handling these substances in the system specifications, other special treatment of the water supply must be used to remove these substances before they enter this product. Otherwise, **WaterBoss®** shall have no obligations under this warranty.

This warranty does not cover damage to a part or parts of the system from causes such as fire, accidents, freezing, or unreasonable use, abuse or neglect by the owner.

This warranty does not cover damage to a part or parts of the system resulting from improper installation. All plumbing and electrical connections should be made in accordance with all local codes and the installation instructions provided with the system. The warranty does not cover damage resulting from use with inadequate or defective plumbing; inadequate or defective water supply or pressure; inadequate or defective house wiring; improper voltage, electrical service, or electrical connections; or violation of applicable building, plumbing, or electrical codes laws, ordinances or regulations.

THIS WARRANTY DOES NOT COVER INCIDENTAL,

CONSEQUENTIAL OR SECONDARY DAMAGES.

ANY IMPLIED WARRANTIES ON THE PRODUCT DESCRIBED IN THIS WARRANTY WILL NOT BE EFFECTIVE AFTER THE EXPIRATION OF THIS WARRANTY.

Some states do not allow limitations on how long an implied warranty lasts or the exclusion or limitation of incidental or consequential damages, so the above limitations and exclusion may not apply to you. This warranty gives you specific legal rights and you may also have other rights which vary from state to state.

Claims Procedures

Any defects covered by this warranty should be promptly reported to: **WaterBoss®**
4343 South Hamilton Road,
Groveport, Ohio 43125

In writing about the defects, please provide the original owner's name, telephone number and original address, serial number and model number of the product, and date of purchase. **WaterBoss®** reserves the right to replace defective parts with exact duplicates or their equivalent.

For Owner's Reference

Model No. _____

Equipment Serial No. _____

Installation Date _____

Installer's Signature _____

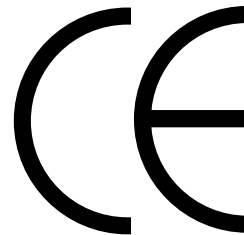
WaterBoss® will not accept any returns after 6 months from date of purchase.

Call: 1-800-437-8993

For Return Information



has these third party listings.



In Business Since 1956

©1998 **WaterBoss**® P.O. Box 298, Groveport, OH 43125

LITHO USA

Form #93966-FIL

RV1002HQW